

# Oticon Consumer Guide

Understanding the benefits of Oticon solutions

life-changing  
**technology**


## IN THIS GUIDE

- Product Portfolio
- Technology Levels
- Custom Options
- Accessories
- Colour Overview



**oticon**  
life-changing **technology**



A photograph of an older couple dancing in a modern kitchen. The woman is wearing a white shirt and a long green skirt, and the man is wearing a blue shirt and brown pants. They are both smiling and looking at each other. The kitchen has dark wood cabinets and a white countertop. There are some glasses and a plant on the counter.

A company driven by two  
fundamental beliefs

# Life-changing

## **PEOPLE CENTRIC**

We want to change the lives of people with hearing loss. We understand that to liberate people from the limitations of hearing loss, it requires insights into how people live their lives and how the brain works.

# technology

## **TECHNOLOGY LEADER**

We are the technology leader of our industry.  
We drive innovation forward and challenge conventions to offer market-leading hearing aid technology.



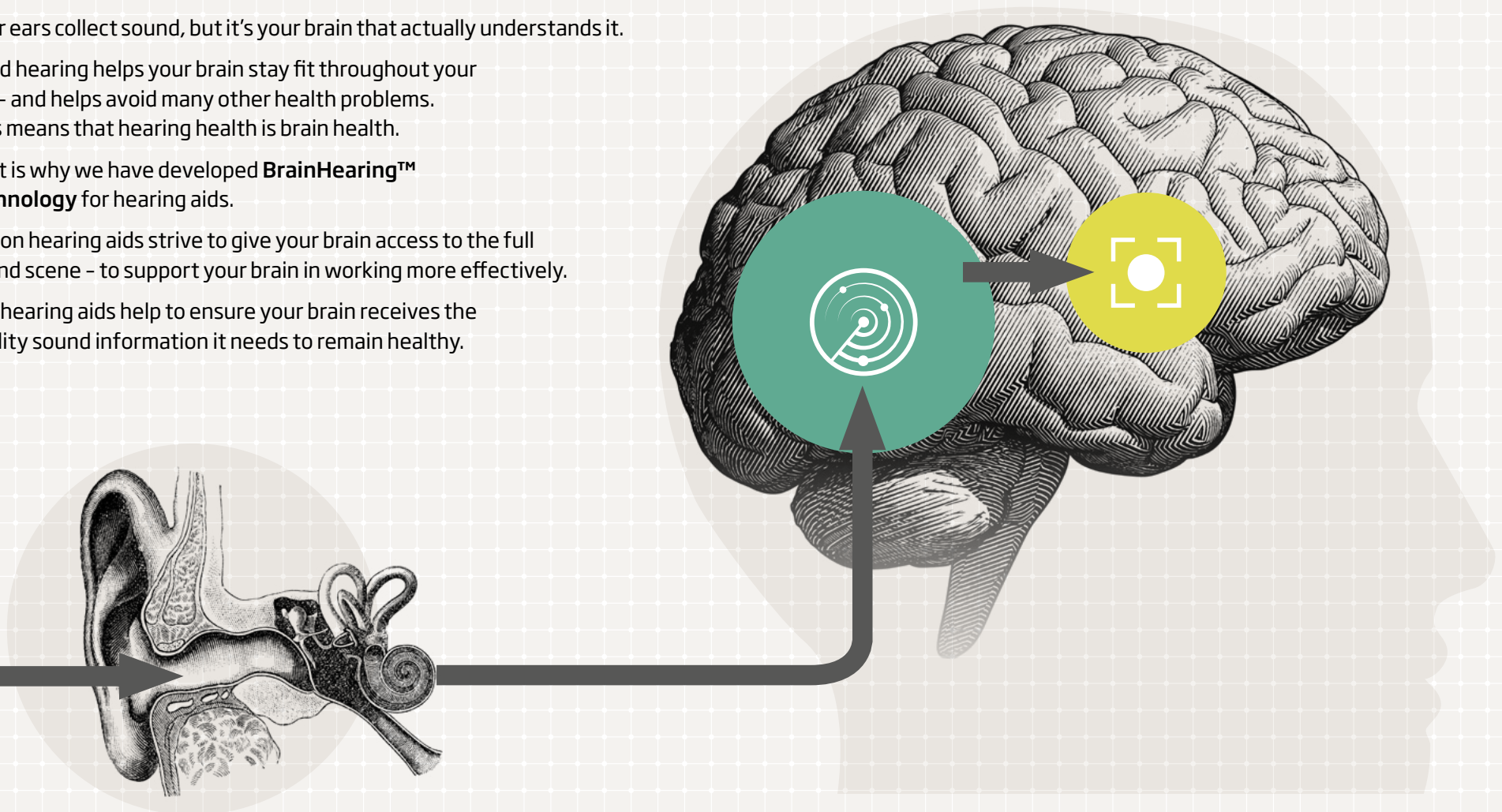
# BrainHearing™ - How hearing works in the brain

**oticon**  
life-changing technology



## Hearing is thinking

- Your ears collect sound, but it's your brain that actually understands it.
- Good hearing helps your brain stay fit throughout your life - and helps avoid many other health problems. This means that hearing health is brain health.
- That is why we have developed **BrainHearing™ technology** for hearing aids.
- Oticon hearing aids strive to give your brain access to the full sound scene - to support your brain in working more effectively.
- Our hearing aids help to ensure your brain receives the quality sound information it needs to remain healthy.



# An entire Portfolio built on BrainHearing™



	Rechargeable	RITE, BTE & Rechargeable	Custom	Power	Paediatric	CROS/ BiCROS
<b>Premium</b>	Oticon More 1	Opn S 1	Opn 1	Xceed 1	Opn Play 1 Xceed Play 1	Opn S 1 Xceed 1
<b>Advanced</b>	Oticon More 2 & 3	Opn S 2 & 3	Opn 2 & 3	Xceed 2	Opn Play 2 Xceed Play 2	Opn S 2 Xceed 2
<b>Essential</b>		Ruby 1 & 2	Siya 1 & 2	Xceed 3		Xceed 3 Ruby 1 & 2
<b>Connectivity</b>	MFi, ASHA (More only), ConnectClip, TV Adapter, Phone Adapter, Remote Control					
<b>Classroom Connectivity</b>	EduMic					
<b>Fitting</b>	Genie 2 20.2, incl. RemoteCare					



# Oticon More™

# A hearing aid **designed to support your brain**



The DNN is a technology we have trained with 12 million real-life sound scenes. This built-in intelligence ensures each individual sound is delivered with detail and clarity.

The DNN is a technology we have trained with 12 million real-life sound scenes. This built-in intelligence ensures each individual sound is delivered with detail and clarity.

# Oticon miniRITE R: Oticon More™








	Oticon More 1	Oticon More 2	Oticon More 3
<b>Speech Understanding</b>			
MoreSound Intelligence™	Level 1	Level 2	Level 3
Environment configuration	5 Options	5 Options	3 Options
Virtual Outer Ear	3 Configurations	1 Configuration	1 Configuration
Spatial Balancer	100%	60%	60%
Neural Noise Suppression, Difficult / Easy	10 dB / 4 dB	6 dB / 2 dB	6 dB / 0 dB
Sound Enhancer	3 Configurations	2 Configurations	1 Configuration
MoreSound Amplifier™	•	•	•
Feedback Prevention	MoreSound Optimizer™ & Feedback shield	MoreSound Optimizer™ & Feedback shield	MoreSound Optimizer™ & Feedback shield
Spatial Sound™	4 Estimators	2 Estimators	2 Estimators
Soft Speech Booster	•	•	•
Frequency lowering	Speech Rescue™	Speech Rescue™	Speech Rescue™
<b>Sound Quality</b>			
Clear Dynamics	•	•	-
Better-Ear Priority	•	•	-
Fitting Bandwidth	10 kHz	8 kHz	8 kHz
Bass Boost (streaming)	•	•	•
Processing Channels	64	48	48
<b>Listening Comfort</b>			
Transient Noise Management	4 configurations	3 configurations	3 configurations
Wind Noise Management	•	•	•
<b>Personalisation &amp; Optimising Fitting</b>			
Fitting Bands	24	20	18
Multiple Directionality options	•	•	•
Adaptation Manager	•	•	•
Fitting Formulas	VAC+, NAL-NL1/NAL-NL2, DSL 5.0	VAC+, NAL-NL1/NAL-NL2, DSL 5.0	VAC+, NAL-NL1/NAL-NL2, DSL 5.0
<b>Connecting to the World</b>			
Stereo streaming (2.4 GHz)	•	•	•
Oticon ON App & Oticon RemoteCare App	•	•	•
ConnectClip	•	•	•
EduMic	•	•	•
Remote Control 3.0	•	•	•
TV Adapter 3.0	•	•	•
Phone Adapter 2.0	•	•	•
<b>Special Requirements</b>			
Tinnitus SoundSupport™	•	•	•



# Oticon miniRITE R: Oticon More™



**oticon**  
life-changing technology

	1. Understanding speech 	2. Handling noise 	3. Unique fitting 	4. Handling environments 	5. Connectivity 
	<ul style="list-style-type: none"> <li>• Speech clarity and richness</li> <li>• More adjustment options if you need it</li> <li>• Communication with facemasks</li> </ul>	<ul style="list-style-type: none"> <li>• Contrast between speech and noise</li> <li>• Comfort in difficult situations</li> </ul>	<ul style="list-style-type: none"> <li>• Customisation to your hearing fingerprint</li> <li>• Troubleshooting</li> <li>• Adjustments to changes in your hearing</li> </ul>	<ul style="list-style-type: none"> <li>• Adjustments to fit the variability of your daily life environments</li> </ul>	<ul style="list-style-type: none"> <li>• 2.4GHz</li> <li>• Made for iPhone &amp; Android</li> <li>• ConnectClip</li> <li>• Options for TV, Telecoil &amp; remote control</li> </ul>
Oticon More 1	★★★★★★	★★★★★★	★★★★★★	★★★★★★	★★★★★★
Oticon More 2	★★★★★★	★★★★★★	★★★★★★	★★★★★★	★★★★★★
Oticon More 3	★★★★★★	★★★★★★	★★★★★★	★★★★★★	★★★★★★

In the full sound scene, Oticon More 1 can create greater contrast between meaningful sounds/speech and less meaningful sounds/noise than Oticon More 3.



Speech

Meaningful sounds

Less meaningful sounds/noise

Oticon More 1



Full sound scene

Oticon More 2



Full sound scene

Oticon More 3



Full sound scene

# The OpenSound Experience

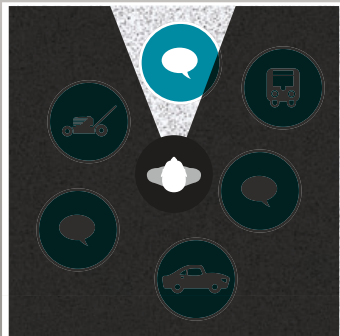
## OpenSound Navigator Levels

### Old World

VS

### OpenSound Experience

#### Traditional technology



Traditional directionality  
- focusing on one speaker,  
while suppressing all other  
sounds.

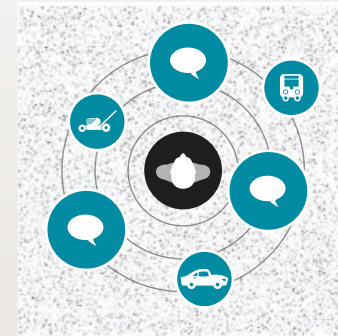
#### OpenSound Navigator:

Oticon Opn S 1



The **easiest listening experience** with maximum reduction of back-ground noise and rapid reduction of loud noise coming from specific directions while preserving speech.

Oticon Opn S 2



An **easier listening experience** with moderate reduction of background noise, and reduction of loud noise coming from specific directions while preserving speech.

Oticon Opn S 3



An **improved listening experience** with basic reduction of background noise, and reduction of loud noise coming from specific directions while preserving speech.



Background noise from all directions



Noise between speakers from specific directions



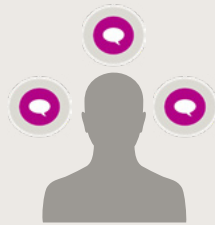
Distinct speech



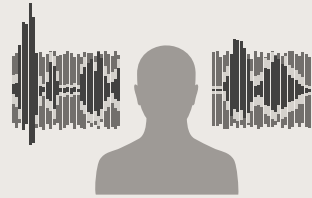
# Oticon miniRITE & BTE: Opn S & Ruby

	Oticon Opn S 1	Oticon Opn S 2	Oticon Opn S 3	Oticon Ruby 1	Oticon Ruby 2
<b>Speech Understanding</b>					
OpenSound Optimizer™	•	•	•		
OpenSound Navigator™	Level 1	Level 2	Level 3		
- Balancing power effect	100%	50%	50%		
- Max. noise removal	9dB	5dB	3dB		
Noise Reduction LX				•	•
Multiband Adaptive Directionality LX				•	•
Speech Guard™ LX	Level 1	Level 2	Level 3		
Single Compression LX				•	•
Spatial Sound™ LX	4 estimators	2 estimators	2 estimators		
Soft Speech Booster LX	•	•	•		
Speech Rescue™ LX	•	•	•	•	
<b>Sound Quality</b>					
Clear Dynamics (Input range 113dB)	•	•			
Spatial Noise Management	•	•			
Fitting Bandwidth	10 kHz	8 kHz	8 kHz	8 kHz	8 kHz
Processing Channels	64	48	48	48	48
<b>Listening Comfort</b>					
Transient Noise Management	4 configurations	On/Off	On/Off	On/Off	
Feedback shield LX	•	•	•	•	•
Super Shield				•	
Wind Noise Management	•	•	•	•	•
Binaural Coordination	•	•	•	•	•
<b>Personalisation &amp; Optimising Fitting</b>					
YouMatic™ LX	3 configurations	2 configurations	1 configuration		
Fitting Bands	16	14	12	10	8
Listening Programs	Up to 4	Up to 4	Up to 4	Up to 4	Up to 4
Adaptation Management	•	•	•	•	•
Fitting Formulas	VAC+ NAL-NL1+2, DSL 5.0	VAC+ NAL-NL1+2, DSL 5.0	VAC+ NAL-NL1+2, DSL 5.0	NAL-NL1+2, DSL 5.0	NAL-NL1+2, DSL 5.0
<b>Connecting to the World</b>					
Stereo Streaming (2.4 GHz)	•	•	•	•	•
Made for iPhone®	•	•	•	•	•
Oticon ON App	•	•	•	•	•
ConnectClip (optional)	•	•	•	•	•
TV Adaptor 3.0 (optional)	•	•	•	•	•
Remote Control 3.0 (optional)	•	•	•	•	•
<b>Special Requirements</b>					
Tinnitus SoundSupport™	•	•	•	•	•
CROS Compatibility	•	•		•	•

# Oticon miniRITE & BTE: Opn S & Ruby



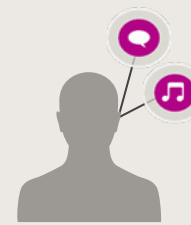
**Conversation  
in noise**



**Lowering of  
background noise**



**Localisation  
of sounds**



**Clarity  
(Speech and music)**



**Personalised  
listening experience**



**Connectivity**

Opn S1	Open Sound Experience 360° speech access ★★★★★	★★★★★	★★★★★	★★★★★	★★★★★	★★★★★
Opn S2	Open Sound Experience 360° speech access ★★★★★	★★★★☆	★★★★★	★★★★★	★★★★★	★★★★★
Opn S3	Open Sound Experience 360° speech access ★★★★★	★★★★★	★★★★★	★★★★★	★★★★★	★★★★★
Ruby 1	Focus to front ★★★	★★★	★★★	★★★	★★★	★★★★★
Ruby 2	Focus to front ★★★	★★★ (no transient noise management)	★★★	★★★ (no frequency lowering)	★★★	★★★★★

## Opn S:

- OpenSound Optimizer
- OpenSound Navigator

## Ruby:

- Multiband Adaptive Directionality LX
- Noise Reduction LX

## Opn S:

- OpenSound Navigator

## Ruby:

- Multiband Adaptive Directionality LX
- Noise Reduction LX

- Spatial Sound LX
- Speech Guard™ LX
- Clear Dynamics
- Bandwidth

- OpenSound Optimizer
- OpenSound Navigator
- Speech Guard™ LX
- Clear Dynamics
- Bandwidth
- Frequency bands

- Fitting bands
- YouMatic™ LX
- Soft Speech Booster LX

- 2.4GHz
- Made for iPhone
- ConnectClip
- Options for TV, Telecoil & remote control



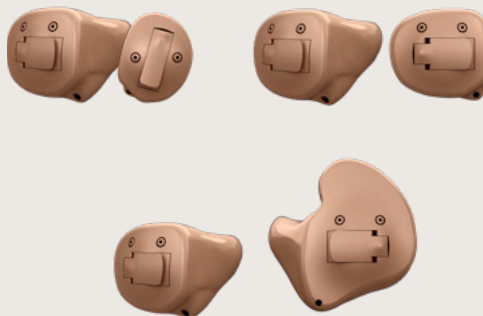
# Custom Instrument Options: Opn & Siya

## Most discreet options



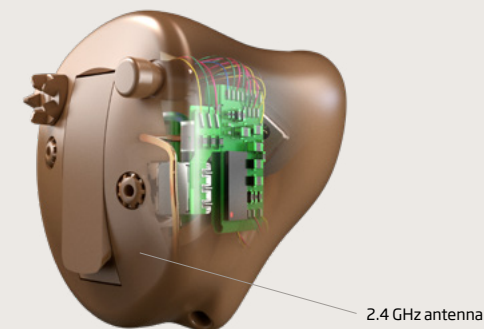
The IIC and CIC styles are the most discreet and may even be invisible when fitted correctly.

## Best performance in noise



For the best performance in background noise we recommend the ITC and ITE styles, which have two microphones.

## Connectivity



ITC and ITE styles can be fitted with a 2.4GHz antenna for connecting to smartphones & other devices. Please note this may increase the size of the instrument.

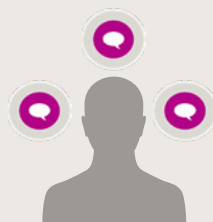
	IIC	CIC	ITC	ITE HS, ITE FS	ITE HS, ITE FS
Battery	10	10	312	312	13
Fitting Levels	75 85	75 85	75 85 90 100	75 85 90 100	75 85 90 100
NFMI	-	0	•	•	•
2.4GHz	-	-	0*	0*	0*
Microphones	1	1	2	2	2
Pushbutton	-	0	0	0	0
Volume Wheel	-	-	0	0	0
Telecoil	-	-	0^	0^	0^
AutoPhone	-	-	0	0	0

# Oticon Custom: Opn & Siya

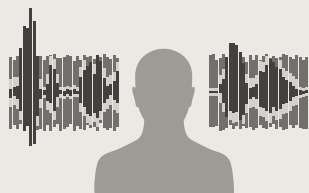
	Oticon Opn 1	Oticon Opn 2	Oticon Opn 3	Oticon Siya 1	Oticon Siya 2
<b>Speech Understanding</b>					
OpenSound Navigator™	Level 1	Level 2	Level 3		
- Balancing power effect	100%	50%	50%		
- Max. noise removal	9dB	5dB	3dB		
Noise Reduction LX				•	•
Multiband Adaptive Directionality LX				•	•
Speech Guard™ LX	Level 1	Level 2	Level 3		
Single Compression LX				•	•
Spatial Sound™ LX	4 estimators	2 estimators	2 estimators		
Soft Speech Booster LX	•	•	•		
Speech Rescue™ LX	•	•	•	•	
<b>Sound Quality</b>					
Clear Dynamics (Input range 113dB)	•	•			
Spatial Noise Management	•	•			
Fitting Bandwidth	10 kHz	8 kHz	8 kHz	8 kHz	8 kHz
Processing Channels	64	48	48	48	48
<b>Listening Comfort</b>					
Transient Noise Management	4 configurations	On/Off	On/Off	On/Off	
Feedback shield LX	•	•	•	•	•
Wind Noise Management	•	•	•	•	•
Binaural Coordination	•	•	•	•	•
<b>Personalisation &amp; Optimising Fitting</b>					
YouMatic™ LX	3 configurations	2 configurations	1 configuration		
Fitting Bands	16	14	12	10	8
Listening Programs	Up to 4	Up to 4	Up to 4	Up to 4	Up to 4
Adaptation Management	•	•	•	•	•
Fitting Formulas	VAC+ NAL-NL1+2, DSL 5.0	VAC+ NAL-NL1+2, DSL 5.0	VAC+ NAL-NL1+2, DSL 5.0	NAL-NL1+2, DSL 5.0	NAL-NL1+2, DSL 5.0
<b>Connecting to the World*</b>					
Stereo Streaming (2.4 GHz)	•	•	•	•	•
Made for iPhone®	•	•	•	•	•
Oticon ON App	•	•	•	•	•
ConnectClip (optional)	•	•	•	•	•
TV Adaptor 3.0 (optional)	•	•	•	•	•
Remote Control 3.0 (optional)	•	•	•	•	•
<b>Special Requirements</b>					
Tinnitus SoundSupport™	•	•	•	•	•



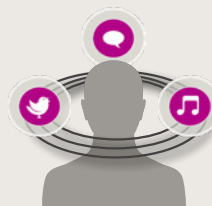
# Oticon Custom: Opn & Siya



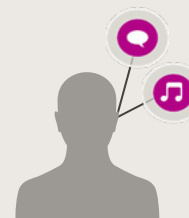
**Conversation  
in noise**



**Lowering of  
background noise**



**Localisation  
of sounds**



**Clarity  
(Speech and music)**



**Personalised  
listening experience**



**Connectivity\***

Opn 1	Open Sound Experience 360° speech access ★★★★★	★★★★★	★★★★★	★★★★★	★★★★★	★★★★★
Opn 2	Open Sound Experience 360° speech access ★★★★★	★★★★	★★★★	★★★★	★★★★	★★★★★
Opn 3	Open Sound Experience 360° speech access ★★★★	★★★★	★★★★	★★★★	★★★★	★★★★★
Siya 1	Focus to front ★★	★★	★	★★	★★	★★★★★
Siya 2	Focus to front ★★	★★ (no transient noise management)	★	★★ (no frequency lowering)	★	★★★★★

**Opn:**

- OpenSound Navigator

**Siya:**

- Multiband Adaptive Directionality LX
- Noise Reduction LX

**Opn:**

- OpenSound Navigator

**Siya:**

- Multiband Adaptive Directionality LX
- Noise Reduction LX

- Spatial Sound LX
- Speech Guard™ LX
- Clear Dynamics
- Bandwidth

- OpenSound Navigator
- Speech Guard™ LX
- Clear Dynamics
- Bandwidth
- Frequency bands

- Fitting bands
- YouMatic™ LX
- Soft Speech Booster LX

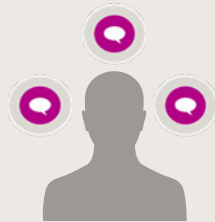
- 2.4GHz
- Made for iPhone
- ConnectClip
- Options for TV, Telecoil & remote control

# Oticon BTE SP & BTE UP: Xceed

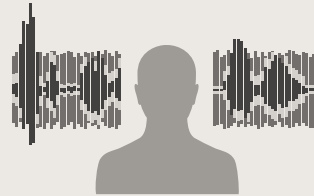
	Oticon Xceed 1	Oticon Xceed 2	Oticon Xceed 3
<b>Speech Understanding</b>			
OpenSound Navigator™	Level 1	Level 2	-
- Balancing power effect	100%	50%	-
- Max. noise removal	9 dB	5 dB	-
OpenSound Optimizer™	•	•	•
Noise Reduction LX	-	-	•
Multiband Adaptive Directionality LX	-	-	•
Open Sound Booster	•	•	-
Speech Guard™ LX	Level 1	Level 3	-
Single Compression	-	-	•
Speech Rescue™ LX	•	•	•
<b>Sound Quality</b>			
Clear Dynamics	•	-	-
Spatial Noise Management	•	-	-
Processing Channels	48	48	48
Bass Boost (streaming)	•	•	•
<b>Listening Comfort</b>			
Transient Noise Management	4 configurations	3 configurations	-
Feedback Shield LX	•	•	•
Wind Noise Management	•	•	•
<b>Personalisation &amp; Optimising Fitting</b>			
YouMatic™ LX	3 configurations	2 configurations	-
Fitting Bands	14	12	8
Oticon Firmware Updater	•	•	•
Multiple Directionality Options	•	•	•
Adaptation Management	•	•	•
VC Range and Step Size	•	•	•
Fitting Formulas	DSE/DSE linear, VAC+, NAL-NL1+2, DSL v5.0	DSE/DSE linear, DSL v5.0, NAL-NL1+2, VAC+	DSE/DSE linear, DSL v5.0, NAL-NL1+2, VAC+
<b>Connecting to the World</b>			
Stereo streaming (2.4 GHz)	•	•	•
Made for iPhone®	•	•	•
Oticon ON App	•	•	•
ConnectClip, Remote Control 3.0, TV Adapter 3.0	•	•	•
DAI/FM and EduMic Compatible	•	•	•
<b>Special Requirements</b>			
Bimodal Fitting Panel	•	•	•
CROS/BICROS	•	•	•
Tinnitus SoundSupport™	•	•	•



# Oticon BTE SP & BTE UP: Xceed



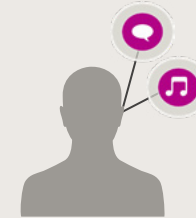
Conversation  
in noise



Lowering of  
background noise



Localisation  
of sounds



Clarity  
(Speech and music)



Personalised  
listening experience



Connectivity

Xceed SP/UP 1	Open Sound Experience 360° speech access ★★★★★	★★★★★	★★★★★	★★★★★	★★★★★	★★★★★
Xceed SP/UP 2	Open Sound Experience 360° speech access ★★★★★	★★★★☆	★★★★	★★★★	★★★★	★★★★★
Xceed SP/UP 3	Focus to front ★★	★★	★	★★	★★	★★★★★

## Xceed 1 & 2:

- OpenSound Optimizer
- OpenSound Navigator

## Xceed 3:

- Multiband Adaptive Directionality LX
- Noise Reduction LX

## Xceed 1 & 2:

- OpenSound Navigator

## Xceed 3:

- Multiband Adaptive Directionality LX
- Noise Reduction LX

- Spatial Sound LX
- Speech Guard™ LX
- Clear Dynamics
- Bandwidth

- OpenSound Optimizer
- OpenSound Navigator
- Speech Guard™ LX
- Clear Dynamics
- Bandwidth
- Frequency bands

- Fitting bands
- YouMatic™ LX
- Soft Speech Booster LX

- 2.4GHz
- Made for iPhone
- ConnectClip
- Options for TV, Telecoil & remote control

# Oticon Colour Overview

## Oticon More, Opn S & Xceed colours



Chroma Beige  
C090



Terracotta  
C094



Chestnut Brown  
C093



Silver  
C044



Silver Grey  
C091



Steel Grey  
C092



Diamond Black  
C063

— Oticon Opn S miniRITE, miniRITE-T, miniRITE R, BTE PP • Oticon Xceed BTE SP, BTE UP —

## Oticon Ruby colours



Chroma Beige  
C090



Chestnut Brown  
C093



Silver Grey  
C091



Steel Grey  
C092



Diamond Black  
C063

Additional colour  
available for Oticon  
More miniRITE R only.



Hear Pink  
C079

— Oticon Ruby miniRITE, miniRITE-T, miniRITE R, BTE, BTE PP —

## Oticon Custom instrument colours



Beige  
C001



Light Brown  
C002



Medium Brown  
C003



Dark Brown  
C004

— IIC, CIC, ITC, ITE HS, ITE FS —

## Oticon IIC instrument colours



Black  
C005



Right



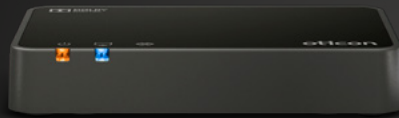
Left

— IIC —

# Oticon Accessories

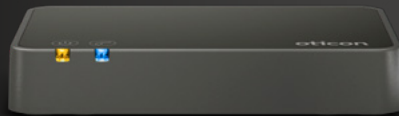
**oticon**  
life-changing technology

## Wireless Connectivity



### TV Adapter 3.0

Stream sound from your TV straight to your hearing aids.



### Phone Adapter 2.0

Stream phone calls from your home phone via the ConnectClip.

### Remote Control 3.0

Simple easy-to-use remote control for your hearing aids.



### EduMic

Remote microphone for classrooms. Includes 3.5mm audio jack and Europin port for ear-level FM receiver.



### ConnectClip

- Remote microphone for lectures, one-to-one conversations, and more.
- Hands-free streaming of phone calls and audio from Bluetooth smartphones.
- Remote control for your hearing aids.



Charger for  
Oticon More,  
Opn S &  
Ruby

Oticon CROS  
for single-sided  
deafness



- MFi - Stereo streaming for phone calls & audio
- Oticon ON app
- Oticon RemoteCare app

Download on the  
**App Store**

Works with  
**android**

GET IT ON  
**Google Play**

Apple, the Apple logo, iPhone, iPad, and iPod touch are trademarks of Apple Inc., registered in the U.S. and other countries. App Store is a service mark of Apple Inc. Android, Google Play, and the Google Play logo are trademarks of Google LLC.



life-changing  
**technology**



**oticon**  
life-changing **technology**